

DO NOT SCALE

VIEW ON SIDE 2 SURFACE MOUNT COMPONENTS ONLY

VIEW ON SIDE 2 SURFACE MOUNT COMPONENTS ONLY

ISSUE 11: C/R 25155 C4,D4,D13,D14,R8-R11 & R55 DELETED. R7 WAS 10k. IC13,R56,TP(RESET) & LK-A - LK-D & TABLE ADDED. PCB WAS ISSUE 7. GW 3-10-97	CHANGE REQUEST ISSUE B C/R 24015 PCB CHANGED C/R 24037 IC9 AND VIEW 'B' DELETED NJA 11-94
ISSUE 12: C/R 25179 REFS D3 & V2 SWAPPED. VALUES V8 & V10 SWAPPED. VARIANT ADDED TO NOTE 2. NOTES MOVED. PCB WAS ISSUE 08. LABEL ADDED TO RST TEST POINT. GW 6-11-97	ISSUE C C/R 24107 COMPONENT VALUES CHANGED. PCB CHANGED JB 30-1-95
ISSUE 13 TABLE: 'OTHERS' WAS 08-04964-001 & -002x. C/R 25368 11-5-98 MRU	ISSUE 2 C/R 24182 R52 & R53 ADDED LAND PATTERNS CHANGED C/R 24216 DRG TITLE WAS CONTROL HEAD NJA 4-4-95
ISSUE 14 REF SHT 2	ISSUE 3: C/R 24270 PCB WAS ISSUE 4. C26 WAS 1u. 22-5-95 NJA
ISSUE 15 TABLE - H1/R16 ADDED. C/R 25724 GW 2-11-98	ISSUE 4: C/R 24295 R16 WAS 18ohm NJA 11-7-95
ISSUE 16 TABLE - H1/R16 DELETED. C/R 25820 GW 1-12-98	ISSUE 5: C/R 24474 R54 ADDED. IC11 ROTATED. C27 WAS 1u SMT DN SIDE 2. NJA 20-2-96
ISSUE 17 C23 WAS 1808 C/R 26022 SCS 28-5-99	ISSUE 6: C/R 24583 V10 WAS BCX20 V8 WAS BCX20 BCL 08-05-96
ISSUE 18 REF SHT 2	ISSUE 7 VARIANT TABLE ADDED. C/R 24797 JFB 18-11-96
	ISSUE 8 ITEM 10 WAS 10 WAY x2. D14 & R55 ADDED. C/R 24910 BCL 10/3/97
	ISSUE 9 TABLE RMV'D. C/R 25082 09-07-97 MRU
	ISSUE 10 REFER SHT 2. C/R 25026
	FILE NAME 08\04964_18.DWG

- NOTES
1. ALL UNMARKED DIODES ARE BAS16
  2. CUT TRACKS AT LINKS A, B & C AND SOLDER ACROSS LINK D (-003 ONLY).

ASSEMBLY	A	B	C	D	LINK	
08-04964-003	X	X	X	✓	LO PWR	SEE NOTE 2
OTHERS	✓	✓	✓	X	STD	

x = NOT ASSIGNED

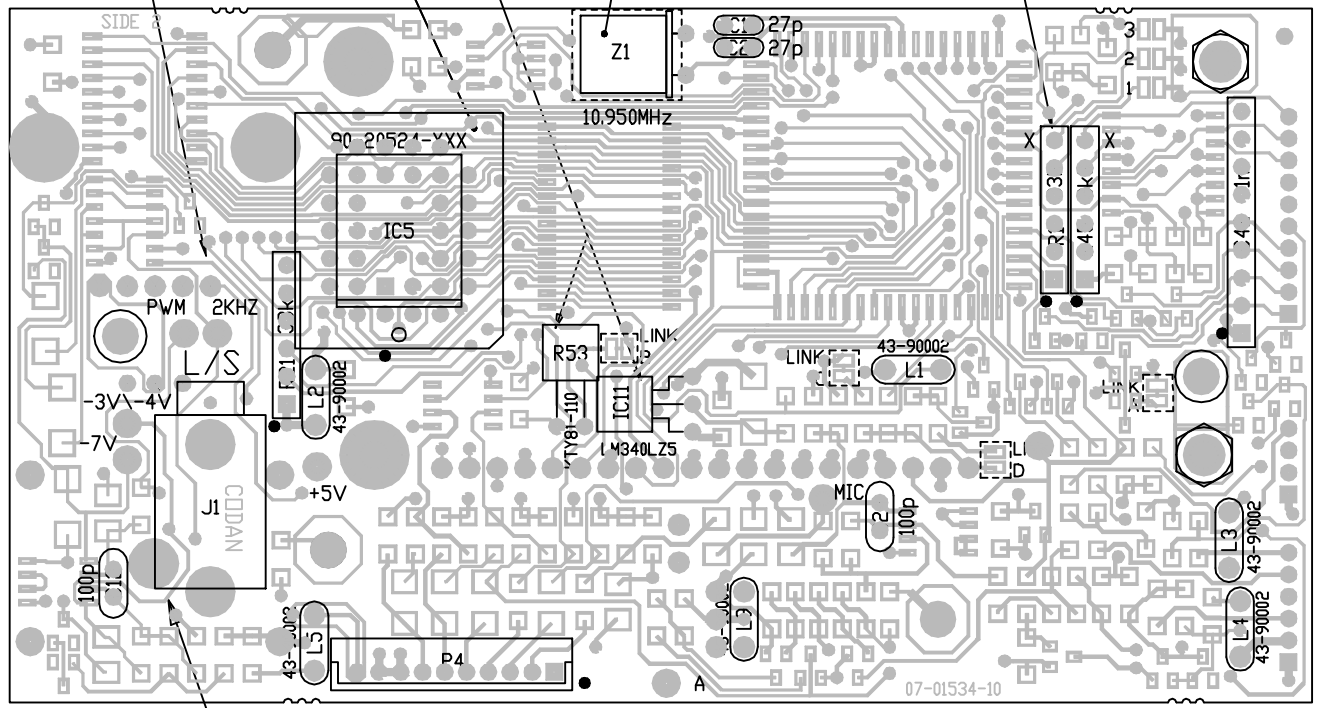
PCB 07-01534-10

	SCALE 2:1		© CODAN PTY LTD, A.C.N. 007 590 605 1994 <b>TITLE</b> DISPLAY PANEL SMT ASSEMBLY	
	DRN	PJL	DATE 10-02-94	
	CHKD	NJA	10-02-94	
MATERIAL		APPD	CM	08-02-95
FINISH		TOLERANCES UNLESS OTHERWISE STATED		A2 DRAWING/DOC NO. 08-04964
		2 PLACES DEC. ±0.25 1 PLACE DEC. 0 PLACE DEC. ANGULAR		
		ISS	18	SHT. 1 OF 2

DO NOT SCALE

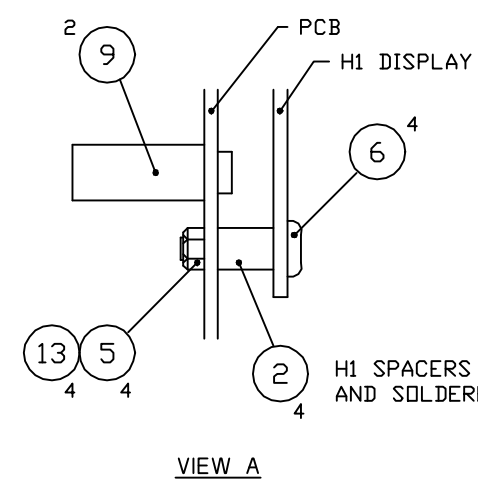
ISSUE 13 IC5 WAS 90-20524-001/2, TABLE: 'OTHERS' WAS 08-04964-001 & -002x. C/R25368	CHANGE REQUEST ISSUE B C/R 24015 PCB CHANGED C/R 24037 IC9 AND VIEW 'B' DELETED NJA 11-94
ISSUE 14 VIEW A: 'STANDOFFS SOLDERED TOP & BOTTOM NOTE DELETED, PART VIEW B: 'TRIM HEADER PINS AFTER SOLDERING' NOTE DELETED. C/R 25402 11-6-98 VS	ISSUE C C/R 24107 COMPONENT VALUES CHANGED PCB CHANGED JB 30-1-95
	ISSUE 2 C/R 24182 R52 & R53 ADDED LAND PATTERNS CHANGED C/R 24216 DRG TITLE WAS CONTRL HEAD NJA 4-4-95
	ISSUE 3: C/R 24270 PCB WAS ISSUE 4 C26 WAS 1u. 22-5-95 NJA
	ISSUE 4: C/R 24295 R16 WAS 18ohm NJA 11-7-95
	ISSUE 5: C/R 24474 R54 ADDED. IC11 ROTATED. C27 WAS 1u SMT ON SIDE 2. NJA 20-2-96
	ISSUE 6: C/R 24583 REFER SHT 1.
	ISSUE 7 VARIANT TABLE ADDED. C/R 24797 JFB 18-11-96
	ISSUE 8 ITEM 10 WAS 10 WAY x2. D14 & R55 ADDED. C/R 24910 BCL 10/3/97
	ISSUE 9 TABLE RMV'D. C/R 25082 09-07-97 MRU
	ISSUE 10 ITEM 13 ADDED. C/R 25026 25-08-97 BCL
	ISSUE 11: C/R 25155 REFER SHT 1. GW 3-10-97
	ISSUE 12: C/R 25179 REFER SHT 1. GW 6-11-97
	FILE NAME 08\04964_18.DWG

ASSEMBLE WITH FLAT TOWARDS PCB  
TRIM PINS SHOWN THUS 'X'  
SECURE TO PCB USING ITEM 12  
IF REQUIRED TRIM PINS SHOWN THUS 'X' ON R1 & R45  
TO PREVENT PINS SHORTING TO LUGS ON H1

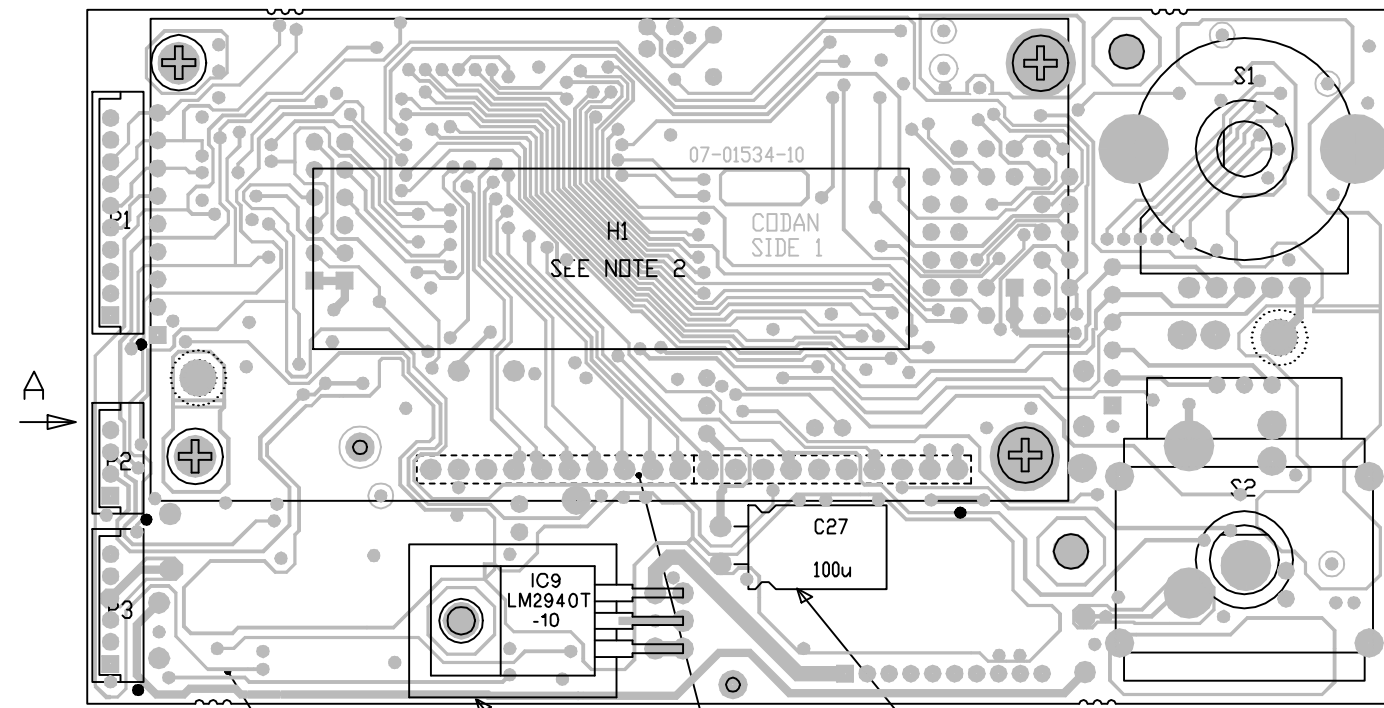


NUT ON J1 MUST BE DISCARDED PRIOR TO SOLDERING.  
CUT LEAD LENGTH OF SPEAKER JACK J1 TO 2.5mm +/-0.5  
AND SOLDER IN POSITION PRIOR TO SOLDERING S2 ON  
OTHER SIDE OF PCB.  
ENSURE L/S SPEAKER JACK IS TOP AND BOTTOM SOLDERED.

VIEW OF SIDE 2

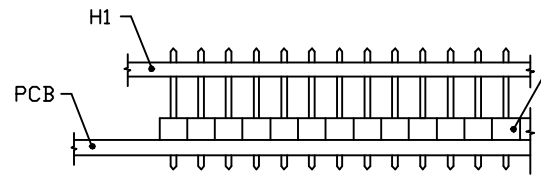


VIEW A



APPLY HEATSINK  
COMPOUND  
BETWEEN MICA  
WASHER & PCB,  
ENSURE IC9 IS  
FLAT AGAINST PCB

VIEW OF SIDE 1



INSERT AND SOLDER SHORTER HEADER  
PINS INTO PCB BEFORE FITTING AND  
SOLDERING H1.  
CHECK THAT LUGS ON H1 DO NOT SHORT  
TO PINS THROUGH PCB.

PART VIEW B

- NOTES:
- BOTH SWITCHES S1 AND S2 TO BE SET DOWN SQUARE AND FLUSH. TRIM LEADS AFTER ASSEMBLY.
  - DISPLAY H1 MUST BE LAST ITEM FITTED. TIGHTEN SCREWS FIRST THEN SOLDER PINS.
  - CUT TRACKS AT LINKS A, B & C AND SOLDER ACROSS LINK D (-003 ONLY).

ASSEMBLY	A	B	C	D	LINK	
08-04964-003	X	X	X	✓	LO PWR	SEE NOTE 3
OTHERS	✓	✓	✓	X	STD	

\* = NOT ASSIGNED

PCB 07-01534-10

	SCALE 2:1		© CODAN PTY LTD, A.C.N. 007 590 605 1994 TITLE DISPLAY PANEL THRU. HOLE ASSEMBLY DRAWING/DOC NO. 08-04964	
	DRN	PJL		DATE 10-02-94
	CHKD	NJA		10-02-94
MATERIAL	APPD	CM	08-02-95	
TOLERANCES UNLESS OTHERWISE STATED			A2 ISS 18	
2 PLACE DEC. ±0.25 1 PLACE DEC. 0 PLACE DEC. ANGULAR				
FINISH			SHT. 2 OF 2	

DO NOT SCALE

ISSUE 14  
C/R 25402

ISSUE 15  
C/R 25724

ISSUE 16  
C/R 25820

ISSUE 17  
C23 WAS 1808 SIZE.  
C/R 26022

ISSUE 18  
LINK TABLE & NOTES  
ADDED.  
C/R 26173

CHANGE REQUEST

ISSUE 2  
C/R 24182  
R52 & R53 ADDED

C/R 24216  
DRG TITLE WAS  
CONTROL HEAD  
NJA 4-4-95

ISSUE 3:  
C/R 24270  
PCB WAS ISSUE 4  
C26 WAS 1u  
22-5-95 NJA

ISSUE 4:  
C/R 24295  
R16 WAS 18ohm  
NJA 11-7-95

ISSUE 5:  
C/R 24474  
R54 ADDED.  
IC11 ROTATED.  
C27 WAS 1u SMT  
ON SIDE 2.  
NJA 20-2-96

ISSUE 6:  
C/R 24583  
V10 WAS BC858.  
V8 WAS BCX20.  
BCL 08-05-96

ISSUE 7  
VARIANT TABLE  
ADDED.  
C/R 24797  
JFB 18-11-96

ISSUE 8  
ITEM 10 WAS  
10 WAY x2.  
D14 & R55 ADDED.  
C/R 24910  
BCL 10/3/97

ISSUE 9  
TABLE REMV'D.  
C/R 25082  
09-07-97 MRU

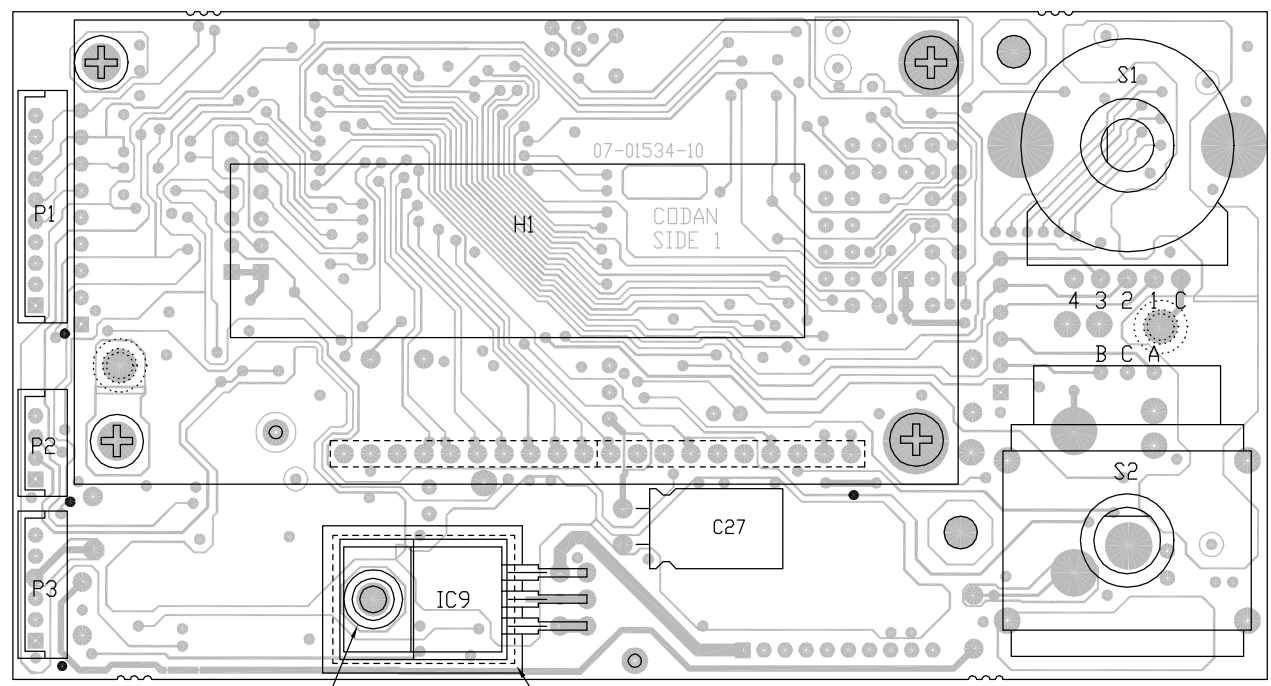
ISSUE 10  
ITEM 13 ADDED.  
C/R 25026  
25-08-97 BCL

ISSUE 11:  
C/R 25155  
C4,D4,D13,D14,R8-R11 &  
R55 DELETED.  
R7 WAS 10k.  
IC13,R56,TP(RESET) &  
LK-A - LK-D ADDED.  
PCB WAS ISSUE 7.  
GW 3-10-97

ISSUE 12:  
C/R 25179  
REFS D3 & V2  
SWAPPED. VALUES  
V8 & V10 SWAPPED.  
VARIANT ADDED TO  
NOTE 2.  
NOTES MOVED.  
PCB WAS ISSUE 08.  
LABEL ADDED TO RST  
TEST POINT.  
GW 6-11-97

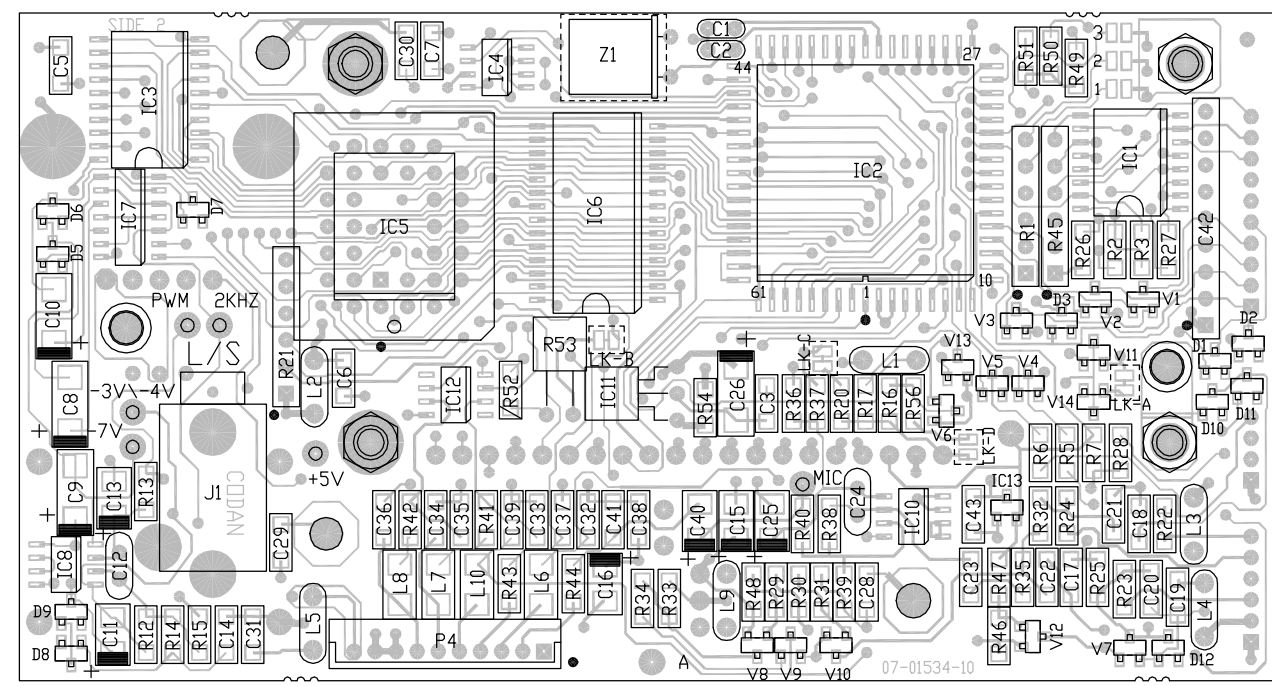
ISSUE 13  
C/R 25368

FILE No.  
08\04964\_18.DWG



INSULATING BUSH INSULATOR

VIEW ON SIDE 1



VIEW ON SIDE 2

- NOTES
1. ALL UNMARKED DIODES ARE BAS16
  2. CUT TRACKS AT LINKS A, B & C AND SOLDER ACROSS LINK D (I-003 ONLY).

ASSEMBLY	A	B	C	D	LINK	
08-04964-003	X	X	X	✓	LO PWR	SEE NOTE 2
OTHERS	✓	✓	✓	X	STD	

\* = NOT ASSIGNED

PCB 07-01534-10

	SCALE 2:1	© CODAN PTY LTD, A.C.N. 007 590 605: 1994 TITLE DISPLAY PANEL ASSEMBLY
	DRN PJL DATE 10-02-94	CHKD NJA 10-02-94
MATERIAL	APPD CM 08-02-95	DRAWING/DOC NO. 08-04964
FINISH	TOLERANCES UNLESS OTHERWISE STATED 2 PLACES DEC. ±0.25 1 PLACE DEC. 0 PLACE DEC. ANGULAR	ISS 18
		SHT. 1 OF 1